



# *Aenaon Park Residences*

—— Athens Riviera ——

# A New Build in an Exceptional Location on the Athens Riviera



CONTENTS

# Introduction

CHAPTER 1 . PAGE 4

# Destination - Location

CHAPTER 2 . PAGE 11

# Experience

CHAPTER 3 . PAGE 22

# The Residences

CHAPTER 4 . PAGE 37





# Where The City Slows And The Sea Begins



INTRODUCTION

DESTINATION - LOCATION

EXPERIENCE

THE RESIDENCES





# *Aenaon Park Residences*

— Athens Riviera —





INTRODUCTION

# Where the Sea Meets the Sky



Computer Generated Imagery is indicative only.



## INTRODUCTION

# Seafront Residences Resort-Style Amenities

Developed by Capital Land  
Development and operated by  
Aenaon Park  
Residences Athens Riviera offers  
seafront living in one of the area's  
most sought-after coastal locations.

Three seafront buildings provide  
residences with panoramic sea views,  
a marina-style lifestyle, and  
exceptional coastal living,  
complemented by an exclusive  
private members' club with resort-  
style amenities, all set along the  
Athens Riviera.



Computer Generated Imagery is indicative only



INTRODUCTION

# Living with a Sea View



Computer Generated Imagery is indicative only



INTRODUCTION

# Exclusive Private Members' Club



Computer Generated Imagery is indicative only.



# Exclusive Private Members' Club Resort-Style Amenities

## OUTDOOR

Lounge Area  
Children's Play Area  
Rooftop Pool  
Rooftop Bar and BBQ

## INDOOR

Reception - Porter  
Children's Play Room  
Gym  
Health and Beauty – Spa Services  
Restaurant - Café – Bar – Indoor Seating  
Business Space

## À LA CARTE SERVICES

Residence Maintenance  
Residence Cleaning  
Laundry and Dry Cleaning  
Grocery Services  
Personal Training  
Salon Services  
Spa Services  
Private Dining and Events  
Childcare  
Maintenance and Engineering Support  
Package and Parcel Handling  
Pet Care and Grooming Services  
Grocery Delivery Coordination

## GENERAL SERVICES

24/7 Security and Porter  
Valet Parking  
Residents' Lounge Service  
Pool and Loungers

Any reference to facilities being provided in or for the Properties are those currently anticipated but may be varied by the Developer without prior notice.







# Marina Lifestyle

INTRODUCTION

DESTINATION - LOCATION

EXPERIENCE

THE RESIDENCES

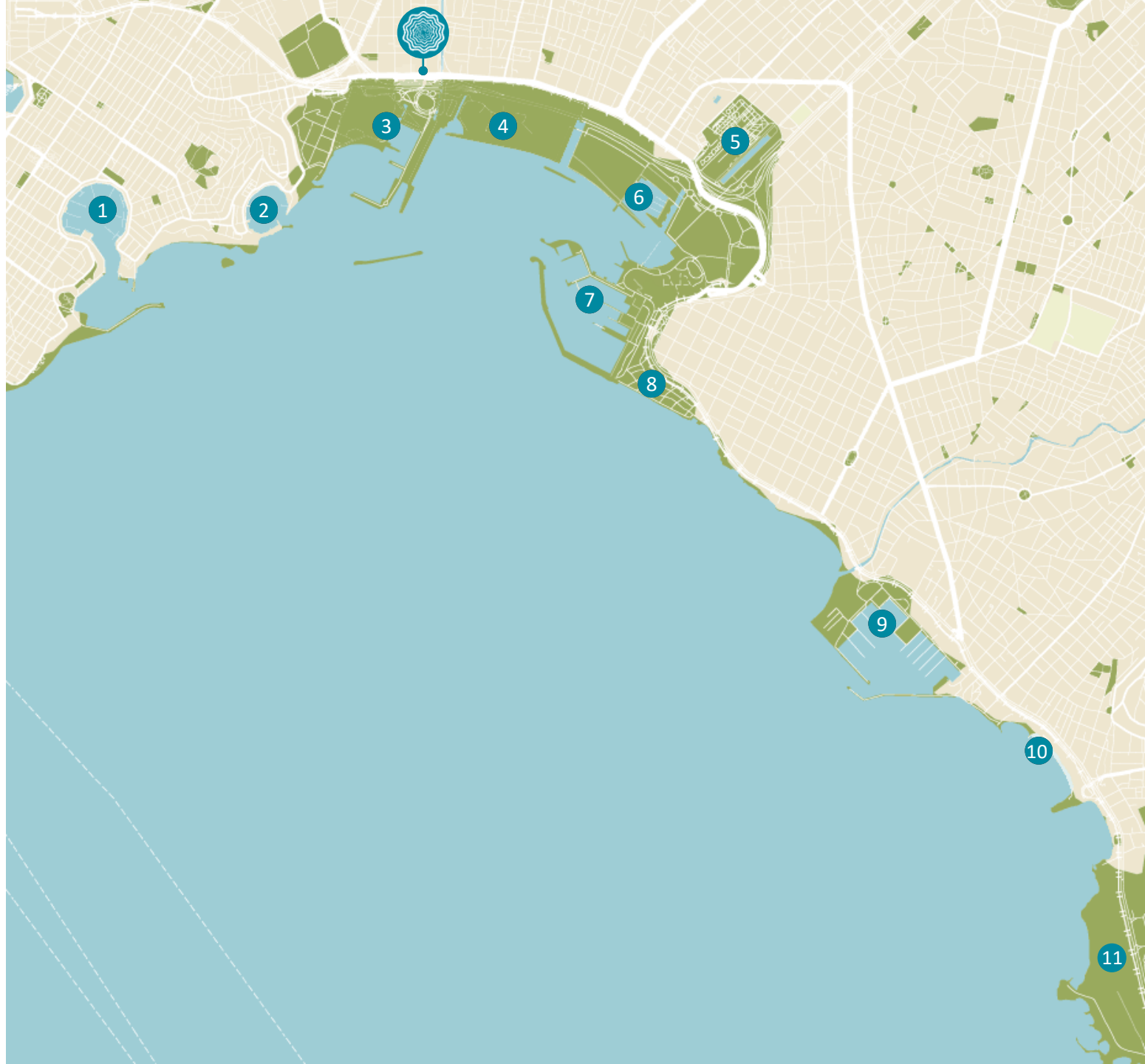
## DESTINATION - LOCATION

# Marina Lifestyle

Aenaon Park Residences is ideally positioned along the Athens Riviera, offering convenient access to the city's key destinations. Athens International Airport is approximately 30 minutes away, while seven nearby marinas and surrounding parks are within 20 minutes, providing an exceptional balance of coastal living and connectivity.

## KEY LOCATIONS

- 1 Marina Zeas
- 2 Mikrolimano Bay
- 3 Athens Marina
- 4 Aenaon Mediterranean Park
- 5 Stavros Niarchos Foundation and Cultural Center
- 6 Kallithea Marina
- 7 Flisvos Marina
- 8 Flisvos Park
- 9 Alimos Marina
- 10 Alimos Beach – Costa del Sol
- 11 The Hellinikon Project





DESTINATION - LOCATION

# Marina Lifestyle

Located in the heart of the Athens Riviera, Aenaon Park Residences is a coastal community with easy access to 7 marinas within 10 minutes. It offers a beachfront and seafront setting close to major regeneration projects, parks, metro stations, restaurants, and everyday amenities by the sea.





DESTINATION - LOCATION

# Marina Lifestyle





DESTINATION - LOCATION

# Aenaon Mediterranean Park

## The Regeneration Project

Located 6 minutes from the seafront residences, Aenaon Mediterranean Park forms part of a major regeneration transforming the Faliro Bay coastline on the Athens Riviera. Inspired by the Mediterranean landscape, it features expansive green spaces, curated planting, and open walking and cycling paths that reconnect the city with the sea. As one of the largest regeneration projects in the region, the park offers a new setting for wellbeing, leisure, and everyday outdoor living, creating a vibrant destination for residents and the wider community.





DESTINATION - LOCATION

# The Marina Lifestyle

## Alimos Marina

Alimos Marina is one of Greece's largest and most historic marinas, located on the Athens Riviera and just 10 minutes from the project. It offers modern marina facilities alongside a coastal promenade with waterfront dining and leisure venues. Living close to the marinas allows year-round enjoyment of the coast, from seaside walks and sailing to relaxed dining and everyday coastal living.





DESTINATION - LOCATION

# The Marina Lifestyle

## Flisvos Marina

Flisvos Marina is 7 minutes away and offers an elegant seaside lifestyle where leisure, wellbeing, and the sea come together. Known for its modern marina facilities, landscaped waterfront walkways, and a refined selection of dining and leisure venues, it is one of the Athens Riviera's most established coastal destinations. Living close to Athens' marinas allows residents to enjoy year-round coastal living, from seaside walks and sailing to cultural attractions and premium amenities, enhancing everyday comfort and lifestyle quality.





DESTINATION - LOCATION

# The Hellinikon Project

The Hellinikon Project, located just 16 minutes away, is one of Europe's largest and most ambitious urban regeneration developments, transforming the former Athens airport into a modern coastal district. Designed to redefine the Athenian Riviera, it brings together expansive parks, cultural and recreational spaces, new waterfront destinations, premium residential neighbourhoods, and landmark leisure facilities. Its scale and vision establish it as a defining reference point for the city's future and a major enhancement to the wider coastal area.



Computer Generated Imagery is indicative only.



DESTINATION - LOCATION

# Stavros Niarchos Foundation Cultural Center

The Stavros Niarchos Foundation Cultural Center, just 10 minutes away, is one of Athens' most iconic modern landmarks, bringing together culture, sustainability, and public life. Home to the National Library of Greece and the Greek National Opera, it is set within an expansive park featuring walking paths, water features, and open-air event spaces. Located just minutes from the project, the SNFCC offers year-round access to world-class performances, cultural experiences, and vibrant outdoor activity, enriching everyday lifestyle and wellbeing in the surrounding area.





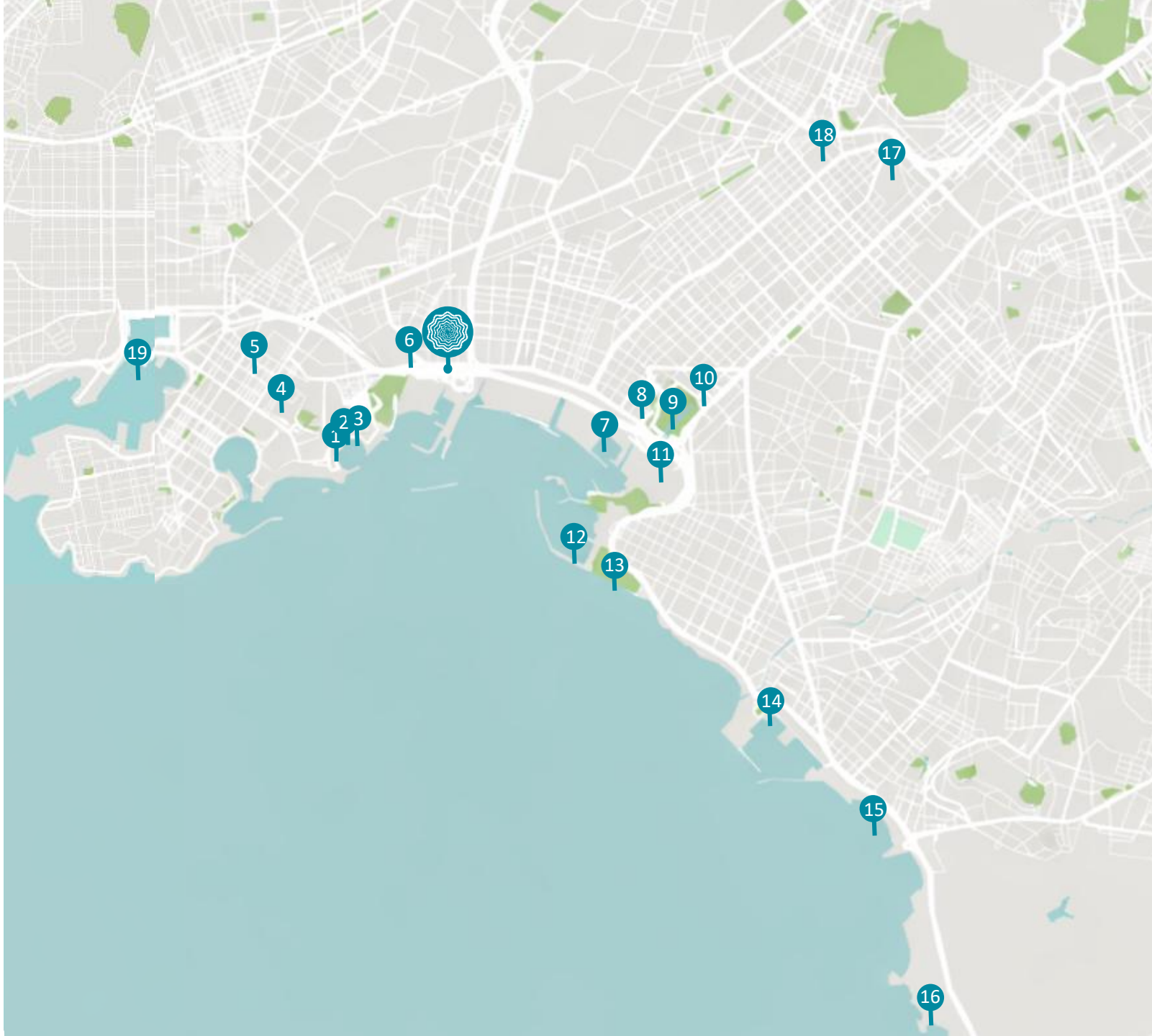
## DESTINATION - LOCATION

# Exceptional Amenities

Beyond marinas and parks, the project is surrounded by fine dining, renowned schools and universities, and hospitals, all just moments from the seafront.

## KEY LOCATIONS

- 1 Istioploikos Restaurant
- 2 Mikrolimano Bay
- 3 Varoulko Seaside
- 4 Piraeus University
- 5 ISP - International School of Piraeus
- 6 Metropolitan Hospital
- 7 Kallithea Marina
- 8 Delta Restaurant
- 9 Stavros Niarchos Foundation and Cultural Center
- 10 Onassis Cardiac Surgery Center
- 11 Faliro Coastal Zone Olympic Center
- 12 Flisvos Marina
- 13 Flisvos Park
- 14 Alimos Marina
- 15 Alimos Beach – Costa del Sol
- 16 The Hellinikon Project
- 17 Harokopio University
- 18 Panteion University
- 19 Piraeus Port



DESTINATION - LOCATION

Transport Connectivity

Aenaon Park Residences is located just 2 minutes from Neo Faliro Metro Station and 5 minutes from Moschato, Dimotiko Theatro and Piraeus Metro Station, offering seamless access to Athens' city centre, the Port of Piraeus, and Athens International Airport.

Numerous bus stops in the surrounding area further enhance accessibility, providing convenient links to key destinations across the city. In addition, the planned extension of Metro Line 1 to the Stavros Niarchos Foundation Cultural Center will further strengthen connectivity and accessibility in the area.

Bus Stop	Walk	Drive	Distance
Skai	1 min	0 min	27 m
Aktaion	1 min	4 min	68 m
Neo Faliro	3 mins	4 mins	68 m

Metro Station	Walk	Drive	Distance
Neo Faliro	7 min	2 mins	500 m
Moschato	24 min	5 mins	1.7 km
Dimotiko Theatro	36 mins	5 mins	2.4 km
Piraeus	38 mins	5 mins	2.7 km
Kallithea	46 mins	7 mins	3.3 km

Train Station	Walk	Drive	Distance
Tavros	54 mins	9 mins	4 km

Tram Stop	Walk	Drive	Distance
Neo Faliro	2 mins	4 mins	180 m
Peace and Friendship Stadium	11 mins	2 mins	750 m
Moschato	11 mins	4 mins	700 m





# Transport Connectivity

Metro Line M1 2-minute drive (from Neo Faliro Metro Station)							
Moschato Station 2 mins	Piraeus Station 3 mins	Kallithea Station 5 mins	Tavros Station 7 mins	Monastiraki Station 13 mins	Viktoria Station 17 mins	Syntagma Station 19 mins	Acropolis Station 24 mins
<div><div></div><div><ul style="list-style-type: none"><li>- Piraeus Retail Park</li><li>- Athens Centra Market</li><li>- Factory Outlet</li></ul></div></div>	<div><div></div><div><ul style="list-style-type: none"><li>- Piraeus Port</li><li>- Piraeus Tower</li><li>- Municipal Theatre of Piraeus</li><li>- University of Piraeus</li></ul></div></div>	<div><div></div><div><ul style="list-style-type: none"><li>- Sivitanidios School</li><li>- Municipal Gallery of Kallithea Sofia Laskaridou</li></ul></div></div>	<div><div></div><div><ul style="list-style-type: none"><li>- Ilsos Park</li><li>- Harokopio University</li></ul></div></div>	<div><div></div><div><ul style="list-style-type: none"><li>- National Historical Museum</li><li>- Ermou Street</li><li>- Central Municipal Market</li><li>- Ilsos Park</li><li>- Harokopio University</li></ul></div></div>	<div><div></div><div><ul style="list-style-type: none"><li>- Athens University of Economics and Business</li><li>- National Archaeological Museum</li></ul></div></div>	<div><div></div><div><ul style="list-style-type: none"><li>- Syntagma Square</li><li>- Hellenic Parliament</li><li>- Hotel Grande Bretagne</li><li>- National Garden Botanical Museum</li></ul></div></div>	<div><div></div><div><ul style="list-style-type: none"><li>- Acropolis</li><li>- Acropolis Museum</li><li>- Benaki Museum</li><li>- Plaka</li></ul></div></div>



# Everything In One Place

INTRODUCTION

DESTINATION - LOCATION

EXPERIENCE

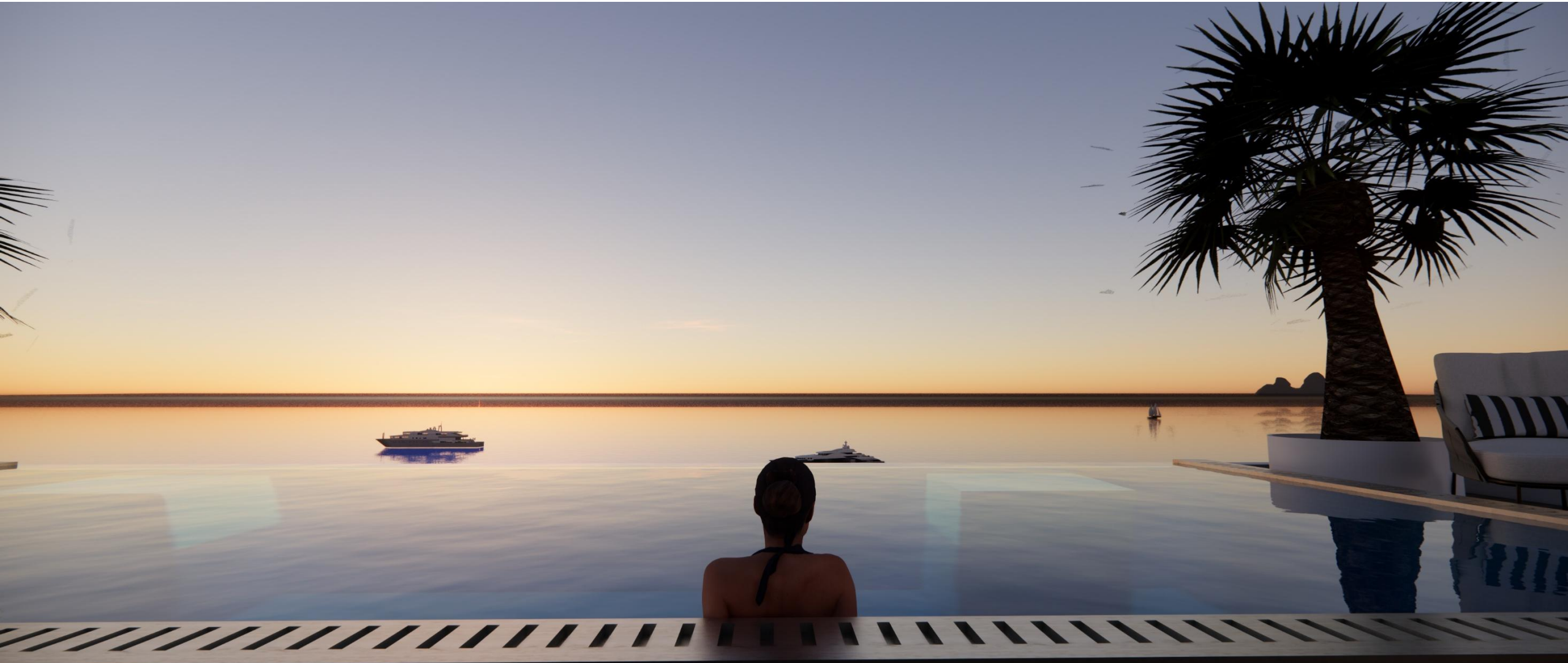
THE RESIDENCES



THE EXPERIENCE

# Rooftop Pool And Bar

The rooftop pool bar offers an exclusive retreat with sea views, designed for relaxed daytime enjoyment and sunset moments. Featuring comfortable lounge areas and a calm poolside atmosphere, it stands as a signature amenity of the project, enhancing the overall living experience.



Computer Generated Imagery is indicative only.



THE EXPERIENCE

# Rooftop Pool And Bar



Computer Generated Imagery is indicative only.



THE EXPERIENCE

# Bar – Restaurant

Exclusive Private Members' Club, the bar and restaurant offers a refined setting for dining and socialising by the sea. With both indoor and outdoor seating, it creates a welcoming atmosphere for relaxed gatherings. As a signature venue within the development, it adds distinction to the project, offering all-day hospitality for residents and members.



Computer Generated Imagery is indicative only.



THE EXPERIENCE

# Bar – Restaurant



Computer Generated Imagery is indicative only.



THE EXPERIENCE

# Bar – Restaurant



Computer Generated Imagery is indicative only.



THE EXPERIENCE

# Bar – Restaurant



Computer Generated Imagery is indicative only.



THE EXPERIENCE

# Spa Exclusive Private Members' Club

Featuring a spa, treatment rooms, and relaxation areas, the space provides residents with a premium wellness experience. This serene setting enhances everyday wellbeing, introducing a sense of luxury and tranquillity at the heart of the project.



Computer Generated Imagery is indicative only.



THE EXPERIENCE

# Meeting & Working Space Exclusive Private Members' Club

The top floor of the exclusive private members' club hosts a refined workspace featuring meeting rooms, open working areas, and a calm lounge setting. Designed to support productivity and creative collaboration, this elegant environment offers residents a sophisticated place to work, meet, and connect.



Computer Generated Imagery is indicative only.



THE EXPERIENCE

# Lounge Common Areas

Thoughtfully designed indoor and outdoor lounge areas provide welcoming spaces for relaxation, work, and social gatherings. Comfortable furnishings and a refined aesthetic create a sense of community, offering residents versatile spaces to enjoy throughout the day. These areas enhance the overall lifestyle experience, serving as natural extensions of the home for leisure and connection.



Computer Generated Imagery is indicative only.



THE EXPERIENCE

# The Lobby



Computer Generated Imagery is indicative only.



THE EXPERIENCE

# The Entrance



Computer Generated Imagery is indicative only.



THE EXPERIENCE

# The Entrance



Computer Generated Imagery is indicative only.



THE EXPERIENCE

# The Lobby



Computer Generated Imagery is indicative only.



THE EXPERIENCE

# Conversation Common Area



Computer Generated Imagery is indicative only.



THE EXPERIENCE

# Conversation Common Area



Computer Generated Imagery is indicative only.





# The Development

INTRODUCTION

DESTINATION - LOCATION

EXPERIENCE

THE RESIDENCES



THE DEVELOPMENT

# Aenaon Park Residences Athens Riviera



Computer Generated Imagery is indicative only.



THE DEVELOPMENT

# Aenaon Park Residences Athens Riviera





**Masterfully  
Designed, Meeting  
Your Every Wish**



Computer Generated Imagery is indicative only.



# The Area

The seafront residences feature a rooftop pool and bar, along with three welcoming lobby areas with indoor and outdoor lounges set within landscaped gardens. Part of the development is an exclusive private members' club, offering a bar and restaurant with indoor and outdoor seating, a gym, a spa, and business facilities. Three lift and staircase cores serve the individual buildings, ensuring easy movement and good connectivity throughout the project.

## KEY LOCATIONS

- 1 Main Entrance
- 2 Exclusive Private Members' Club - Main Entrance
- 3 Exclusive Private Members' Club - Garden
- 4 Conversation Lobby
- 5 Lobby - PART A
- 6 Lobby - PART B
- 7 Lobby - PART C
- 8 Rooftop Pool and Bar

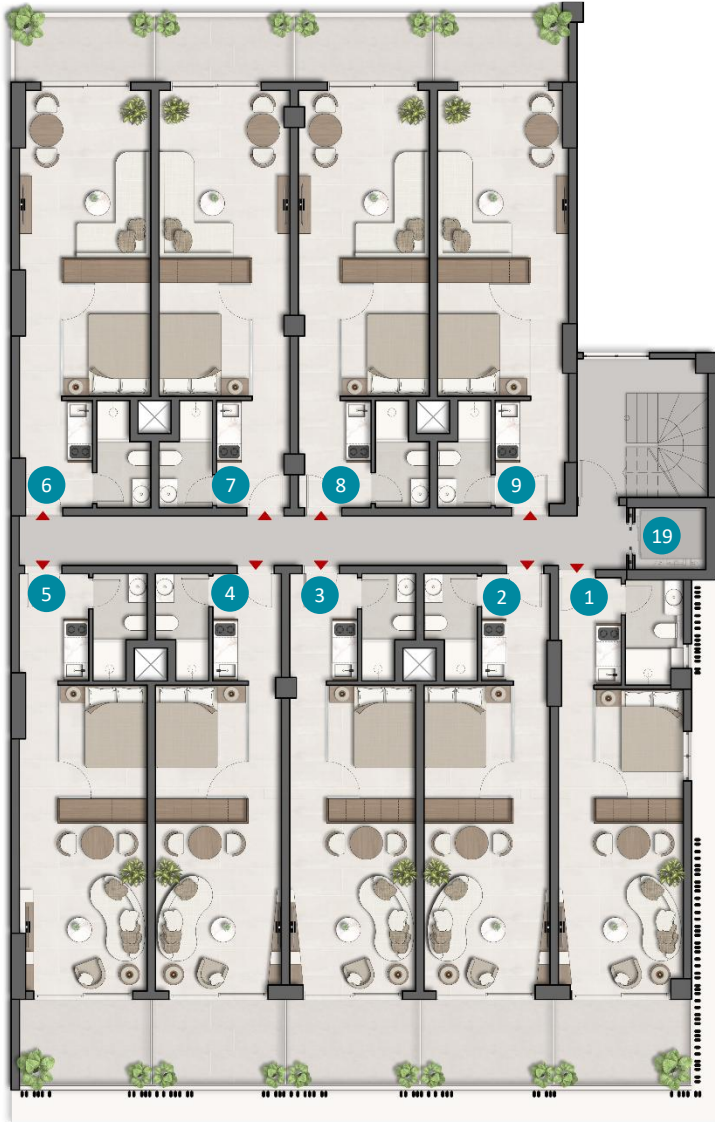
Please note: All the above are subject to verification following completion.  
Purchasers must, therefore, rely on their own inspection to verify any information provided. All dimensions are within + or - 5%



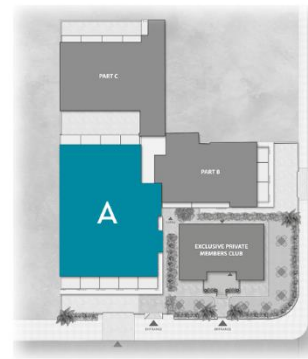


# PART A

FIRST FLOOR



SECOND - THIRD - FOURTH - FIFTH - SIXTH - SEVENTH FLOOR



- 1 A1
- 2 A2
- 3 A3
- 4 A4
- 5 A5
- 6 A6
- 7 A7
- 8 A8
- 9 A9
- 10 B1 - C1 - D1 - E1 - ST1 - Z1
- 11 B2 - C2 - D2 - E2 - ST2 - Z2
- 12 B3 - C3 - D3 - E3 - ST3 - Z3
- 13 B4 - C4 - D4 - E4 - ST4 - Z4
- 14 B5 - C5 - D5 - E5 - ST5 - Z5
- 15 B6 - C6 - D6 - E6 - ST6 - Z6
- 16 B7 - C7 - D7 - E7 - ST7 - Z7
- 17 B8 - C8 - D8 - E8 - ST8 - Z8
- 18 B9 - C9 - D9 - E9 - ST9 - Z9
- 19 LIFT

Please note: All the above are subject to verification following completion.  
Purchasers must, therefore, rely on their own inspection to verify any information provided. All dimensions are within + or - 5%



# PART B



FIRST FLOOR

SECOND - THIRD - FOURTH - FIFTH - SIXTH - SEVENTH FLOOR



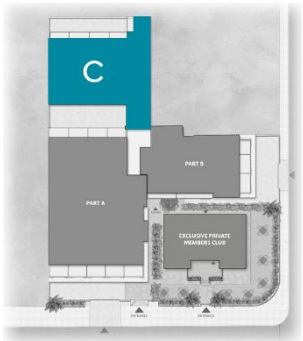
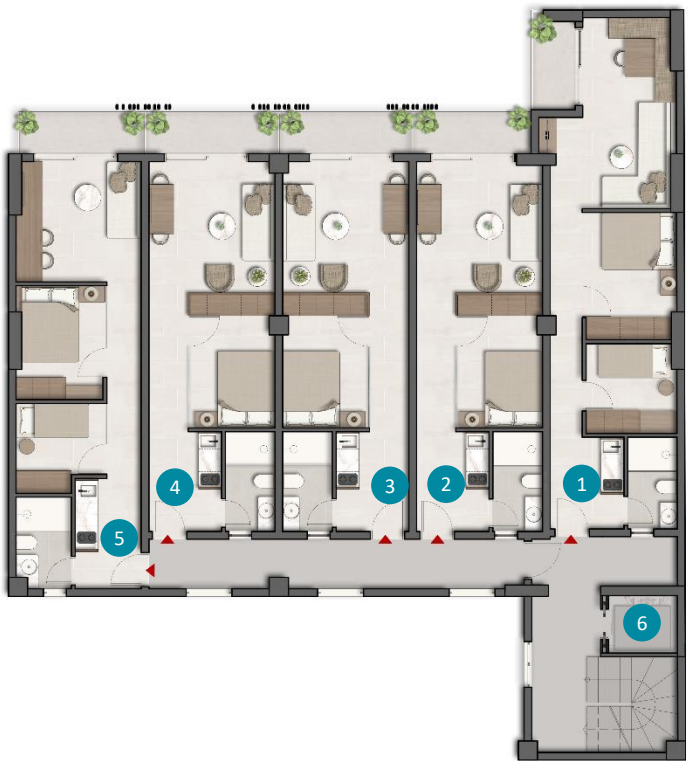
- 1 A10
- 2 A11
- 3 A12
- 4 A13
- 5 B10 - C10 - D10 - E10 - ST10 - Z10
- 6 B11 - C11 - D11 - E11 - ST11 - Z11
- 7 B12 - C12 - D12 - E12 - ST12 - Z12
- 8 B13 - C13 - D13 - E13 - ST13 - Z13
- 9 LIFT

Please note: All the above are subject to verification following completion.  
Purchasers must, therefore, rely on their own inspection to verify any information provided. All dimensions are within + or - 5%



# PART C

FIRST - SECOND - THIRD - FOURTH - FIFTH - SIXTH - SEVENTH FLOOR



- 1 A14 - B14 - C14 - D14 - E14 - ST14 - Z14
- 2 A15 - B15 - C15 - D15 - E15 - ST15 - Z15
- 3 A16 - B16 - C16 - D16 - E16 - ST16 - Z16
- 4 A17 - B17 - C17 - D17 - E17 - ST17 - Z17
- 5 A18 - B18 - C18 - D18 - E18 - ST18 - Z18
- 6 LIFT



PART C  
TYPICAL FLOOR

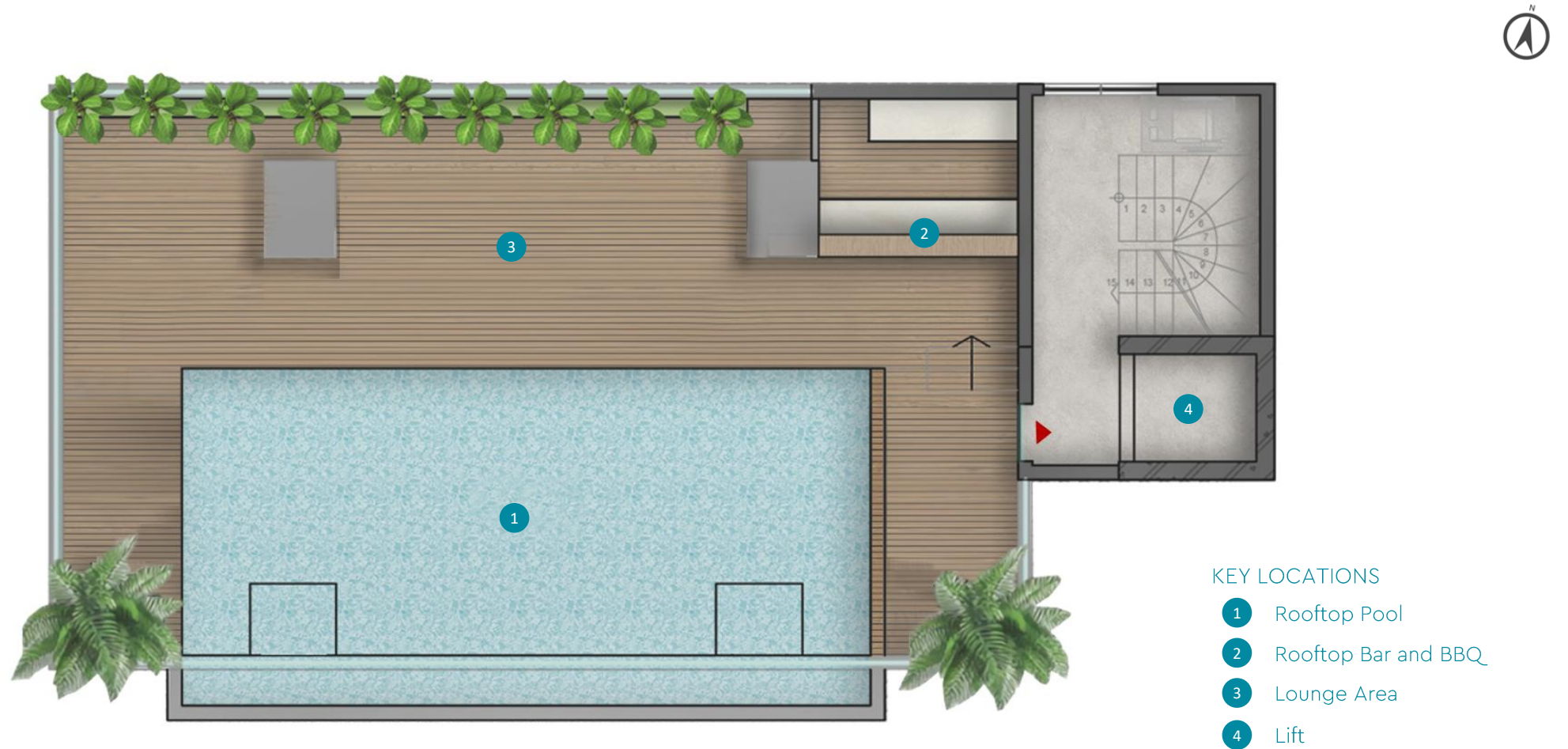
Please note: All the above are subject to verification following completion.  
Purchasers must, therefore, rely on their own inspection to verify any information provided. All dimensions are within + or - 5%



# The Rooftop

## POOL AND BAR EXPERIENCE

The rooftop pool and bar offer an elevated escape with uninterrupted sea views, creating a refined setting for relaxation and socialising. With comfortable lounge areas and a stylish bar, this exclusive space provides residents with a private retreat from sunrise to sunset. As a signature amenity, it enhances the project's coastal lifestyle and adds a distinctive element to everyday living.



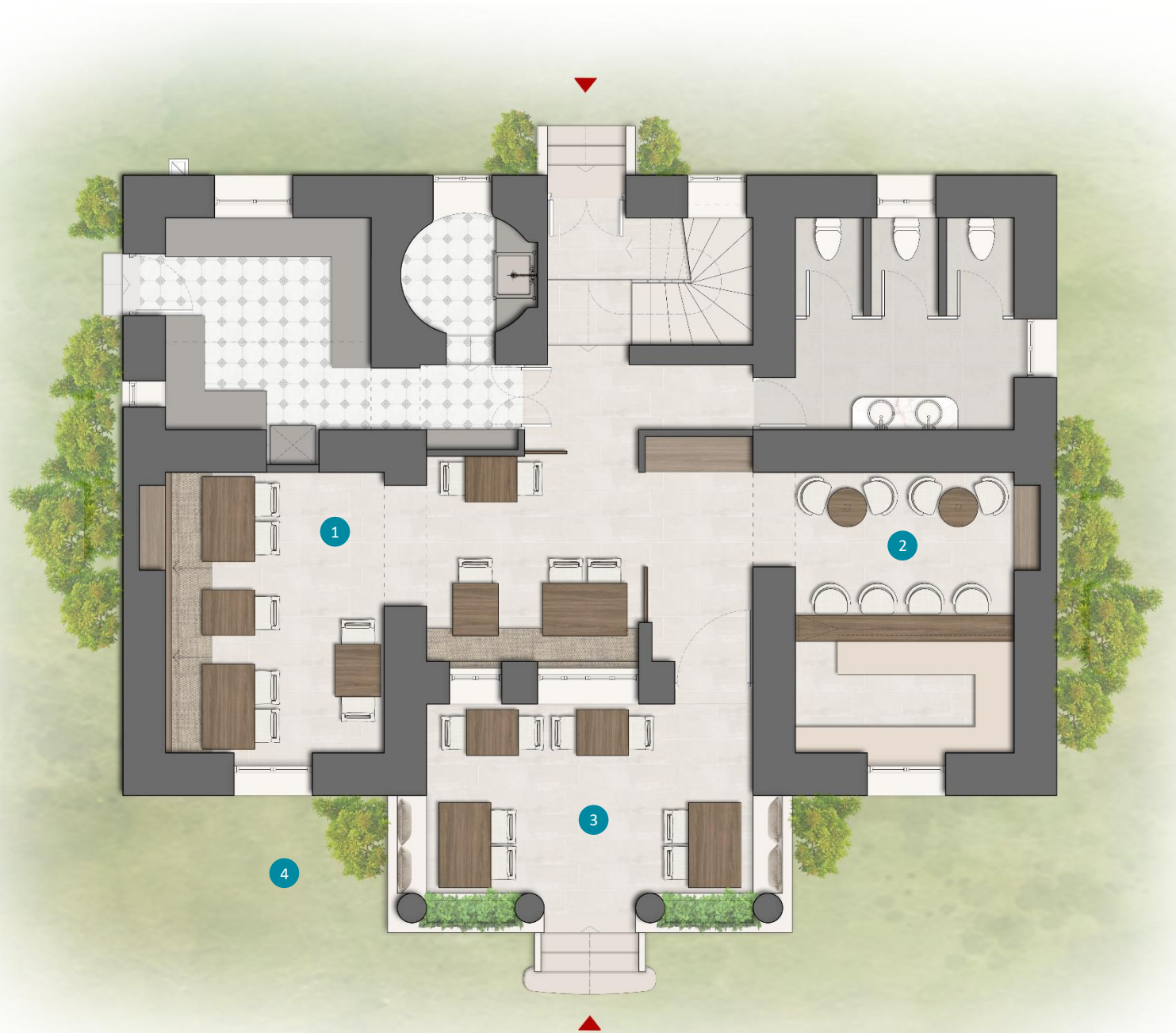


# Exclusive Private Members' Club Resort-Style Amenities

The first floor of the exclusive private members' club offers a refined indoor setting with a restaurant, café, and bar. Designed as an elevated retreat with uninterrupted sea views, it provides an elegant atmosphere that enhances the project's coastal lifestyle and enriches everyday living.

## KEY LOCATIONS

- 1 Restaurant
- 2 Bar
- 3 Terrace
- 4 Garden area



Any reference to facilities being provided in or for the Properties are those currently anticipated but may be varied by the Developer without prior notice.



# Exclusive Private Members' Club Resort-Style Amenities



The second floor of the exclusive private members' club features a gym and a health & beauty spa, including massage and treatment rooms, a sauna, a jacuzzi, and a spa terrace. Elevated sea views provide a serene coastal backdrop for relaxation and everyday wellbeing.

## KEY LOCATIONS

- 1 Spa – Jacuzzi Area
- 2 Spa – Sauna Area
- 3 Spa - Massage and Beauty Room
- 4 Indoor Gym
- 5 Spa Terrace





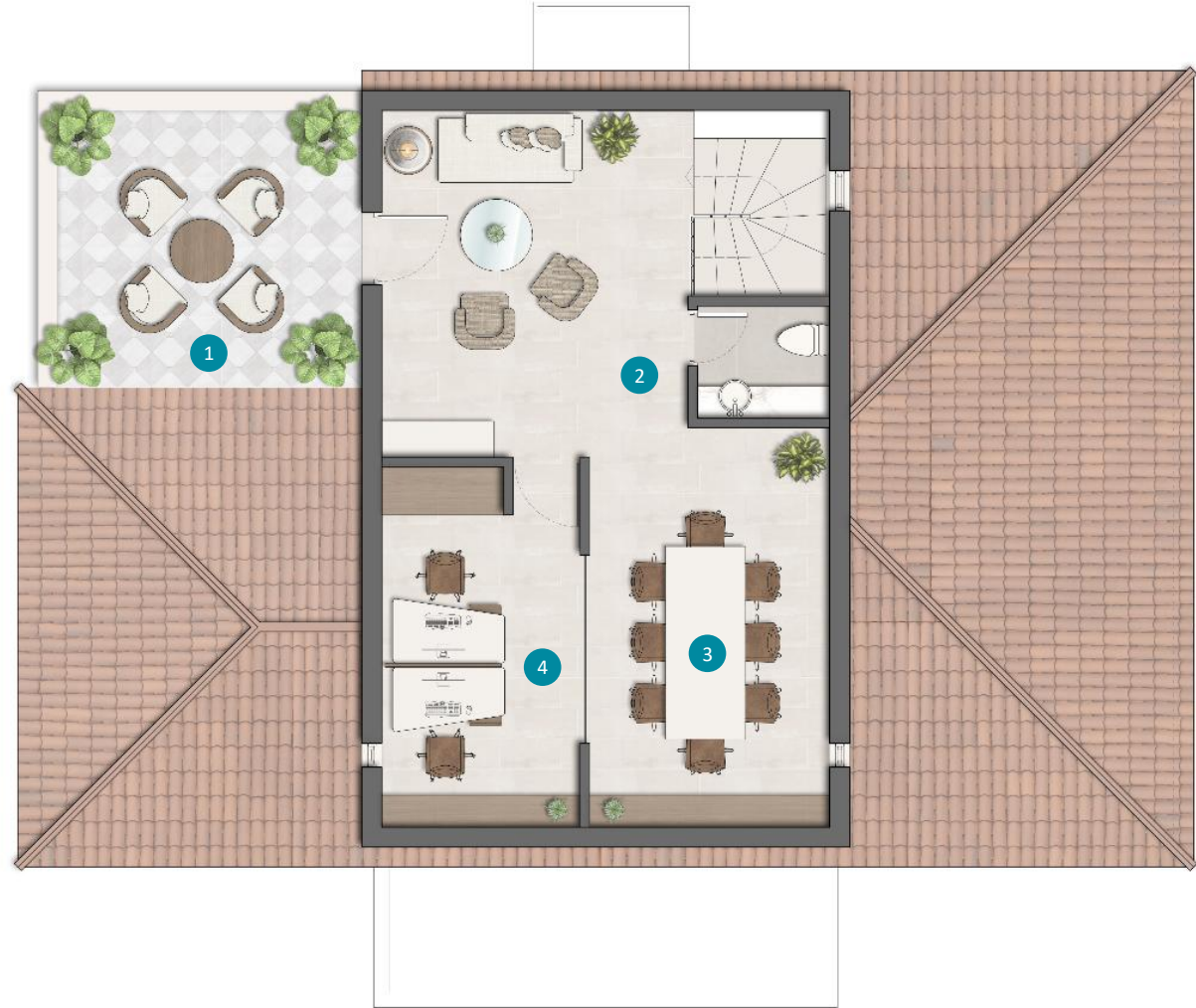
# Exclusive Private Members' Club Resort-Style Amenities



The third floor of the exclusive private members' club features a lounge area, meeting room, business facilities, and an outdoor terrace. With open sea views, these spaces provide an inspiring coastal setting for everyday use.

## KEY LOCATIONS

- 1 Exclusive Private Members' Club Terrace
- 2 Lounge Area
- 3 Meeting Room
- 4 Business Space





# The Residences Gallery



Computer Generated Imagery is indicative only.





Computer Generated Imagery is indicative only.





Computer Generated Imagery is indicative only.





Computer Generated Imagery is indicative only.









Computer Generated Imagery is indicative only.





Computer Generated Imagery is indicative only.





Computer Generated Imagery is indicative only.





Computer Generated Imagery is indicative only.





Computer Generated Imagery is indicative only.





Computer Generated Imagery is indicative only.





Computer Generated Imagery is indicative only.

Computer Generated Imagery is indicative only.





# ***Area Schedule***



AREA SCHEDULE PART A															
Unit No	Floor	Type	Bed / Bath	Net Area (sq.m)	Gross Area (sq.m)	Balcony (sq.m)	Total Area (sq.m)	Unit No	Floor	Type	Bed / Bath	Net Area (sq.m)	Gross Area (sq.m)	Balcony (sq.m)	Total Area (sq.m)
A1	1st Floor	Apartment	1 bed – 1 bath	36.00	40.00	7.50	47.50	E1	5th Floor	Apartment	1 bed – 1 bath	40.00	44.00	7.50	51.50
A2	1st Floor	Apartment	1 bed – 1 bath	35.00	38.00	7.00	45.00	E2	5th Floor	Apartment	1 bed – 1 bath	35.00	38.00	7.00	45.00
A3	1st Floor	Apartment	1 bed – 1 bath	35.00	38.00	7.00	45.00	E3	5th Floor	Apartment	1 bed – 1 bath	35.00	38.00	7.00	45.00
A4	1st Floor	Apartment	1 bed – 1 bath	35.00	38.00	7.00	45.00	E4	5th Floor	Apartment	1 bed – 1 bath	35.00	38.00	7.00	45.00
A5	1st Floor	Apartment	1 bed – 1 bath	37.00	41.00	7.50	48.50	E5	5th Floor	Apartment	1 bed – 1 bath	37.00	41.00	7.50	48.50
A6	1st Floor	Apartment	1 bed – 1 bath	38.00	42.00	6.00	48.00	E6	5th Floor	Apartment	1 bed – 1 bath	38.00	42.00	6.00	48.00
A7	1st Floor	Apartment	1 bed – 1 bath	36.00	40.00	6.00	46.00	E7	5th Floor	Apartment	1 bed – 1 bath	36.00	40.00	6.00	46.00
A8	1st Floor	Apartment	1 bed – 1 bath	36.00	40.00	6.00	46.00	E8	5th Floor	Apartment	1 bed – 1 bath	36.00	40.00	6.00	46.00
A9	1st Floor	Apartment	1 bed – 1 bath	38.00	42.00	6.00	48.00	E9	5th Floor	Apartment	1 bed – 1 bath	38.00	42.00	6.00	48.00
B1	2nd Floor	Apartment	1 bed – 1 bath	40.00	44.00	7.50	51.50	ST1	6th Floor	Apartment	1 bed – 1 bath	40.00	44.00	7.50	51.50
B2	2nd Floor	Apartment	1 bed – 1 bath	35.00	38.00	7.00	45.00	ST2	6th Floor	Apartment	1 bed – 1 bath	35.00	38.00	7.00	45.00
B3	2nd Floor	Apartment	1 bed – 1 bath	35.00	38.00	7.00	45.00	ST3	6th Floor	Apartment	1 bed – 1 bath	35.00	38.00	7.00	45.00
B4	2nd Floor	Apartment	1 bed – 1 bath	35.00	38.00	7.00	45.00	ST4	6th Floor	Apartment	1 bed – 1 bath	35.00	38.00	7.00	45.00
B5	2nd Floor	Apartment	1 bed – 1 bath	37.00	41.00	7.50	48.50	ST5	6th Floor	Apartment	1 bed – 1 bath	37.00	41.00	7.50	48.50
B6	2nd Floor	Apartment	1 bed – 1 bath	38.00	42.00	6.00	48.00	ST6	6th Floor	Apartment	1 bed – 1 bath	38.00	42.00	6.00	48.00
B7	2nd Floor	Apartment	1 bed – 1 bath	36.00	40.00	6.00	46.00	ST7	6th Floor	Apartment	1 bed – 1 bath	36.00	40.00	6.00	46.00
B8	2nd Floor	Apartment	1 bed – 1 bath	36.00	40.00	6.00	46.00	ST8	6th Floor	Apartment	1 bed – 1 bath	36.00	40.00	6.00	46.00
B9	2nd Floor	Apartment	1 bed – 1 bath	38.00	42.00	6.00	48.00	ST9	6th Floor	Apartment	1 bed – 1 bath	38.00	42.00	6.00	48.00
C1	3rd Floor	Apartment	1 bed – 1 bath	40.00	44.00	7.50	51.50	Z1	7th Floor	Apartment	1 bed – 1 bath	40.00	44.00	7.50	51.50
C2	3rd Floor	Apartment	1 bed – 1 bath	35.00	38.00	7.00	45.00	Z2	7th Floor	Apartment	1 bed – 1 bath	35.00	38.00	7.00	45.00
C3	3rd Floor	Apartment	1 bed – 1 bath	35.00	38.00	7.00	45.00	Z3	7th Floor	Apartment	1 bed – 1 bath	35.00	38.00	7.00	45.00
C4	3rd Floor	Apartment	1 bed – 1 bath	35.00	38.00	7.00	45.00	Z4	7th Floor	Apartment	1 bed – 1 bath	35.00	38.00	7.00	45.00
C5	3rd Floor	Apartment	1 bed – 1 bath	37.00	41.00	7.50	48.50	Z5	7th Floor	Apartment	1 bed – 1 bath	37.00	41.00	7.50	48.50
C6	3rd Floor	Apartment	1 bed – 1 bath	38.00	42.00	6.00	48.00	Z6	7th Floor	Apartment	1 bed – 1 bath	38.00	42.00	6.00	48.00
C7	3rd Floor	Apartment	1 bed – 1 bath	36.00	40.00	6.00	46.00	Z7	7th Floor	Apartment	1 bed – 1 bath	36.00	40.00	6.00	46.00
C8	3rd Floor	Apartment	1 bed – 1 bath	36.00	40.00	6.00	46.00	Z8	7th Floor	Apartment	1 bed – 1 bath	36.00	40.00	6.00	46.00
C9	3rd Floor	Apartment	1 bed – 1 bath	38.00	42.00	6.00	48.00	Z9	7th Floor	Apartment	1 bed – 1 bath	38.00	42.00	6.00	48.00
D1	4th Floor	Apartment	1 bed – 1 bath	40.00	44.00	7.50	51.50								
D2	4th Floor	Apartment	1 bed – 1 bath	35.00	38.00	7.00	45.00								
D3	4th Floor	Apartment	1 bed – 1 bath	35.00	38.00	7.00	45.00								
D4	4th Floor	Apartment	1 bed – 1 bath	35.00	38.00	7.00	45.00								
D5	4th Floor	Apartment	1 bed – 1 bath	37.00	41.00	7.50	48.50								
D6	4th Floor	Apartment	1 bed – 1 bath	38.00	42.00	6.00	48.00								
D7	4th Floor	Apartment	1 bed – 1 bath	36.00	40.00	6.00	46.00								
D8	4th Floor	Apartment	1 bed – 1 bath	36.00	40.00	6.00	46.00								
D9	4th Floor	Apartment	1 bed – 1 bath	38.00	42.00	6.00	48.00								

Please note: All the above are subject to verification following completion.  
Purchasers must, therefore, rely on their own inspection to verify any information provided. All dimensions are within + or - 5%.



AREA SCHEDULE  
PART B

Unit No	Floor	Type	Bed / Bath	Net Area (sq.m)	Gross Area (sq.m)	Balcony (sq.m)	Total Area (sq.m)
A10	1st Floor	Apartment	1 bed – 1 bath	35,00	42,00	5,50	47.50
A11	1st Floor	Apartment	1 bed – 1 bath	33,00	39,00	7,00	46.00
A12	1st Floor	Apartment	2 bed – 1 bath	40,00	48,00	14,00	62.00
A13	1st Floor	Apartment	2 bed – 1 bath	46,00	55,00	5,00	60.00
B10	2nd Floor	Apartment	1 bed – 1 bath	35,00	42,00	5,50	47.50
B11	2nd Floor	Apartment	1 bed – 1 bath	33,00	39,00	7,00	46.00
B12	2nd Floor	Apartment	2 bed – 1 bath	44,00	53,00	14,00	67.00
B13	2nd Floor	Apartment	2 bed – 1 bath	46,00	55,00	5,00	60.00
C10	3rd Floor	Apartment	1 bed – 1 bath	35,00	42,00	5,50	47.50
C11	3rd Floor	Apartment	1 bed – 1 bath	33,00	39,00	7,00	46.00
C12	3rd Floor	Apartment	2 bed – 1 bath	44,00	53,00	14,00	67.00
C13	3rd Floor	Apartment	2 bed – 1 bath	46,00	55,00	5,00	60.00
D10	4th Floor	Apartment	1 bed – 1 bath	35,00	42,00	5,50	47.50
D11	4th Floor	Apartment	1 bed – 1 bath	33,00	39,00	7,00	46.00
D12	4th Floor	Apartment	2 bed – 1 bath	44,00	53,00	14,00	67.00
D13	4th Floor	Apartment	2 bed – 1 bath	46,00	55,00	5,00	60.00
E10	5th Floor	Apartment	1 bed – 1 bath	35,00	42,00	5,50	47.50
E11	5th Floor	Apartment	1 bed – 1 bath	33,00	39,00	7,00	46.00
E12	5th Floor	Apartment	2 bed – 1 bath	44,00	53,00	14,00	67.00
E13	5th Floor	Apartment	2 bed – 1 bath	46,00	55,00	5,00	60.00
ST10	6th Floor	Apartment	1 bed – 1 bath	35,00	42,00	5,50	47.50
ST11	6th Floor	Apartment	1 bed – 1 bath	33,00	39,00	7,00	46.00
ST12	6th Floor	Apartment	2 bed – 1 bath	44,00	53,00	14,00	67.00
ST13	6th Floor	Apartment	2 bed – 1 bath	46,00	55,00	5,00	60.00
Z10	7th Floor	Apartment	1 bed – 1 bath	35,00	42,00	5,50	47.50
Z11	7th Floor	Apartment	1 bed – 1 bath	33,00	39,00	7,00	46.00
Z12	7th Floor	Apartment	2 bed – 1 bath	44,00	53,00	14,00	67.00
Z13	7th Floor	Apartment	2 bed – 1 bath	46,00	55,00	5,00	60.00

Please note: All the above are subject to verification following completion.  
Purchasers must, therefore, rely on their own inspection to verify any information provided. All dimensions are within + or - 5%.



## AREA SCHEDULE PART C

Unit No	Floor	Type	Bed / Bath	Net Area (sq.m)	Gross Area (sq.m)	Balcony (sq.m)	Total Area (sq.m)	Unit No	Floor	Type	Bed / Bath	Net Area (sq.m)	Gross Area (sq.m)	Balcony (sq.m)	Total Area (sq.m)
A14	1st Floor	Apartment	2 bed – 1 bath	51.00	62.00	2.00	64.00	ST14	6th Floor	Apartment	2 bed -1 bath	51.00	62.00	2.00	64.00
A15	1st Floor	Apartment	1 bed – 1 bath	36.00	44.00	4.00	48.00	ST15	6th Floor	Apartment	1 bed – 1 bath	36.00	44.00	4.00	48.00
A16	1st Floor	Apartment	1 bed – 1 bath	36.00	44.00	4.00	48.00	ST16	6th Floor	Apartment	1 bed – 1 bath	36.00	44.00	4.00	48.00
A17	1st Floor	Apartment	1 bed – 1 bath	36.00	44.00	4.00	48.00	ST17	6th Floor	Apartment	1 bed – 1 bath	36.00	44.00	4.00	48.00
A18	1st Floor	Apartment	2 bed – 1 bath	44.00	53.00	4.00	57.00	ST18	6th Floor	Apartment	2 bed – 1 bath	44.00	53.00	4.00	57.00
B14	2nd Floor	Apartment	2 bed – 1 bath	51.00	62.00	2.00	64.00	Z14	7th Floor	Apartment	2 bed – 1 bath	51.00	62.00	2.00	64.00
B15	2nd Floor	Apartment	1 bed – 1 bath	36.00	44.00	4.00	48.00	Z15	7th Floor	Apartment	1 bed – 1 bath	36.00	44.00	4.00	48.00
B16	2nd Floor	Apartment	1 bed – 1 bath	36.00	44.00	4.00	48.00	Z16	7th Floor	Apartment	1 bed – 1 bath	36.00	44.00	4.00	48.00
B17	2nd Floor	Apartment	1 bed – 1 bath	36.00	44.00	4.00	48.00	Z17	7th Floor	Apartment	1 bed – 1 bath	36.00	44.00	4.00	48.00
B18	2nd Floor	Apartment	2 bed – 1 bath	44.00	53.00	4.00	57.00	Z18	7th Floor	Apartment	2 bed – 1 bath	44.00	53.00	4.00	57.00
C14	3rd Floor	Apartment	2 bed -1 bath	51.00	62.00	2.00	64.00								
C15	3rd Floor	Apartment	1 bed – 1 bath	36.00	44.00	4.00	48.00								
C16	3rd Floor	Apartment	1 bed – 1 bath	36.00	44.00	4.00	48.00								
C17	3rd Floor	Apartment	1 bed – 1 bath	36.00	44.00	4.00	48.00								
C18	3rd Floor	Apartment	2 bed – 1 bath	44.00	53.00	4.00	57.00								
D14	4th Floor	Apartment	2 bed – 1 bath	51.00	62.00	2.00	64.00								
D15	4th Floor	Apartment	1 bed – 1 bath	36.00	44.00	4.00	48.00								
D16	4th Floor	Apartment	1 bed – 1 bath	36.00	44.00	4.00	48.00								
D17	4th Floor	Apartment	1 bed – 1 bath	36.00	44.00	4.00	48.00								
D18	4th Floor	Apartment	2 bed – 1 bath	44.00	53.00	4.00	57.00								
E14	5th Floor	Apartment	2 bed – 1 bath	51.00	62.00	2.00	64.00								
E15	5th Floor	Apartment	1 bed – 1 bath	36.00	44.00	4.00	48.00								
E16	5th Floor	Apartment	1 bed – 1 bath	36.00	44.00	4.00	48.00								
E17	5th Floor	Apartment	1 bed – 1 bath	36.00	44.00	4.00	48.00								
E18	5th Floor	Apartment	2 bed – 1 bath	44.00	53.00	4.00	57.00								

Please note: All the above are subject to verification following completion.  
Purchasers must, therefore, rely on their own inspection to verify any information provided. All dimensions are within + or - 5%.





# Specifications



## SPECIFICATIONS

### Entrance & Hallway

Carefully designed shared access spaces with emphasis on lighting and plant selection  
Installation of high-tech system lift

### Safety & Security

High standards entrance door with advanced security system  
High quality intercom system - video door phone,  
Lighting with motion sensor and / or button in public areas.  
Security monitoring 24/7  
CCTV system in all closed and open common areas and around the buildings

## APARTMENTS

### General Finishes

Polished plaster walls  
Premium eco-friendly paints for walls and ceilings  
High quality tiles for horizontal and vertical surfaces  
High aesthetics and energy efficient aluminum-controlled panels and double-glazed aluminum windows  
Durable and energy efficient bioclimatic facade made of certified products ideal for creating a perfect environment irrespective of the weather conditions

### Living Room & Hall

High-quality large-scale tiling to floor according to European standards  
Modern cable television  
Ergonomic architectural lighting design based on new technology trends

Interior stylish doors painted with eco-friendly paint.  
High quality ironmongery.

### Bedrooms

Modern cable television  
Detailed design focusing on lighting and ergonomy

### Bathroom

High quality tiling to walls and floors  
Shower set made of glass  
High quality chrome accessories

### Kitchen

High aesthetics and functionality, ergonomic kitchen design  
High quality faucet and sink  
Hygienic and antibacterial work surface  
Protective wall covering

### Electrics

Cooling and heating water independency for less power consumption  
Detailed lighting design  
Thorough ergonomical deliberation regarding sockets, fixtures and wiring  
Electric towel rails for heating in the baths  
Energy Class A++